

openRDM.swiss : a national research data management service for the Swiss scientific community

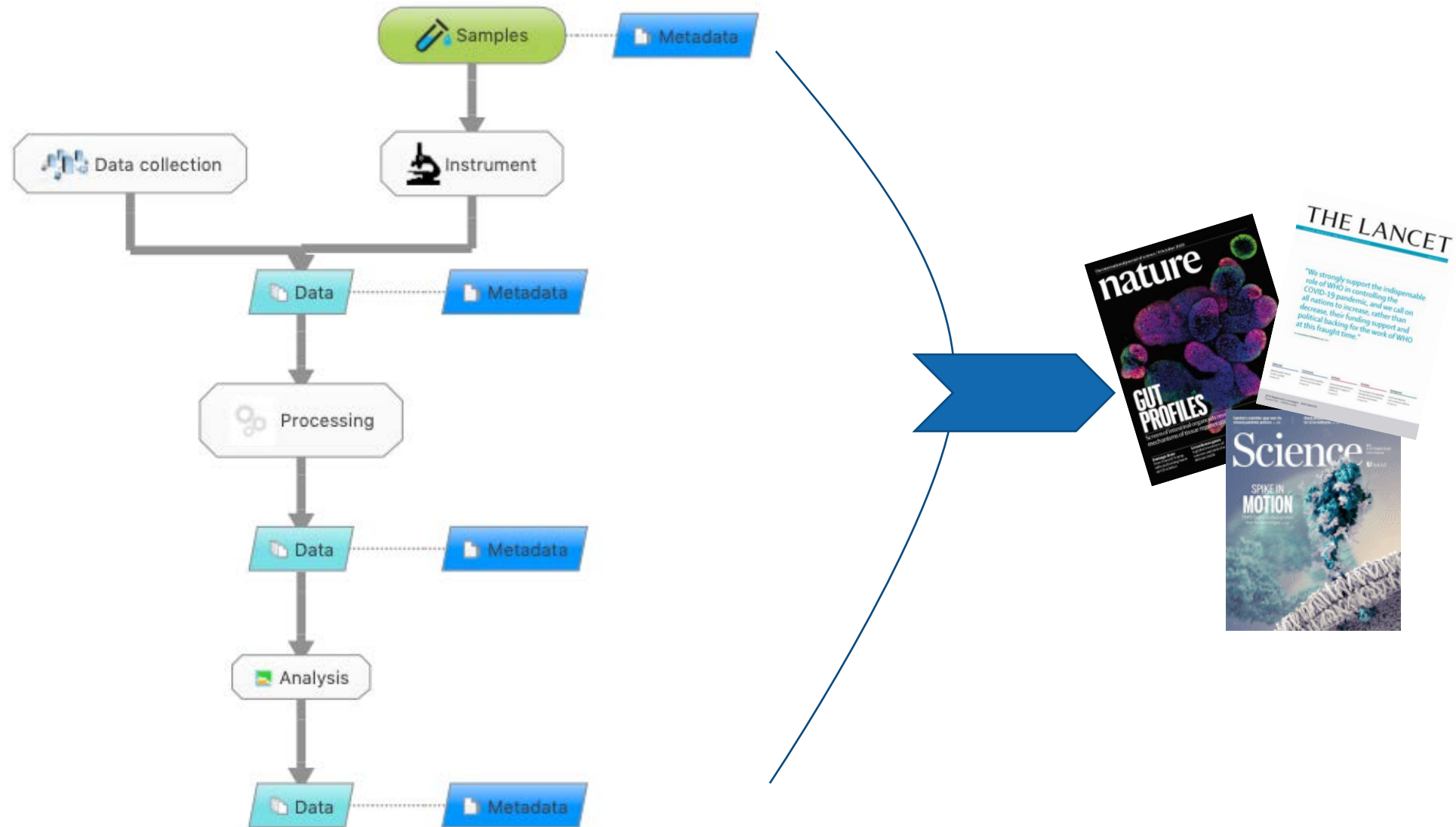
Caterina Barillari
Scientific IT Services, ETH Zurich



Overview

- ❑ Research Data Management with openBIS
- ❑ openRDM.swiss Research Data Management Service
- ❑ Demo

Research workflow in experimental & computational labs



FAIR Data Management

- ❑ Funding agencies and journals increasingly demand that data is published according to the **FAIR**¹ data principles (**F**indable, **A**ccessible, **I**nteroperable, **R**eusable)
- ❑ Lots of data are generated during a research project.



- ❑ Appropriate data and information management from the start of the research process can avoid “data drowning”

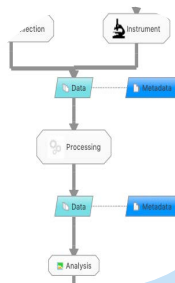
1. The FAIR Guiding Principles for scientific data management and stewardship, *Scientific Data*, Issue 3, 2016. 10.1038/sdata.2016.18.

openBIS: a complete solution for FAIR data management



openBIS facts

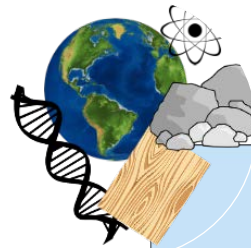
- ❑ Developed at ETHZ since 2007
- ❑ Open source software distributed under Apache v2.0 license



Platform for managing scientific information and supporting research data workflows from “bench” to publication



Used by research groups and facilities @ ETH, Swiss & European Universities, a few companies



Can be used in most quantitative science fields (e.g. life sciences, physics, env. sciences, material sciences, etc)

A national RDM service for the academic community



Cloud-hosted openBIS

Virtual servers per research group, institute or institution
Optionally with JupyterHub server for analytics



Self-hosted openBIS

Support for set up on local IT infrastructure



Training & 'best effort' user support



Current customers

Contacts

Caterina Barillari

openRDM.swiss service manager

caterina.barillari@id.ethz.ch

Henry Lütcke

openRDM.swiss project manager

hluetcke@ethz.ch

openrdm@id.ethz.ch

Acknowledgements

openBIS Dev Team

Juan Fuentes

Franz-Josef Elmer

Viktor Kovtun

Piotr Kupczyk

Mariia Pukhliakova

Swen Vermeul



openBIS Ops Team

Richard Wartenburger

Eugenio Naselli

RDM Team

Caterina Barillari

Priyasma Bhoumik

Henry Lütcke

SIS Section Head

Bernd Rinn

SIS Group Leaders

Sergio Maffioletti

Matthew Baker

Thomas Wüst

<https://sis.id.ethz.ch/>



https://twitter.com/ETH_SIS?lang=en