



Data Life-Cycle Management (DLCCM) Project

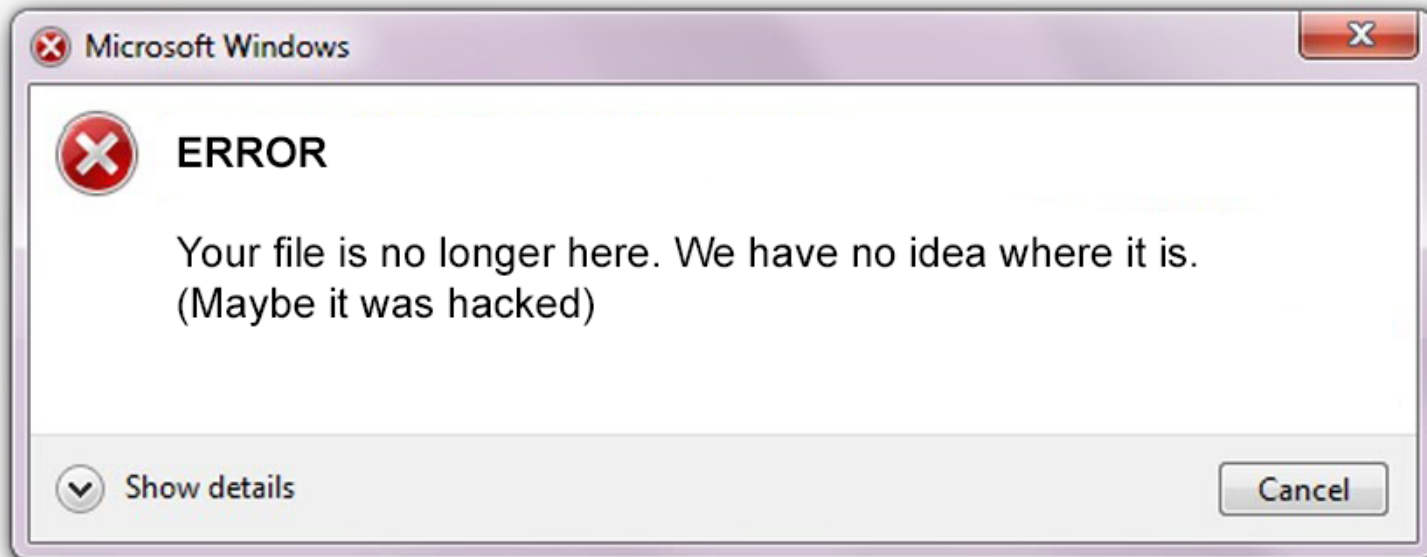
12 June 2018 | ETH Zurich

Presentation for Swiss Research Data Day 2018

Presented by Pierre-Yves Burgi

**”The world’s most valuable resource
is no longer oil, but data.”**

The Economist



What about data sensitivity?

Am I compliant?

Is my data stored safely?

Will my data be here in 2058?

Where is my data exactly?

How well is my data sorted?

Can I retrieve my data?

Our vision

We support researchers in managing their data from research proposal to publication and data archiving

Partners

Bringing together the best



ETH zürich

Hes·so

SWITCH



Achievements

87 workshops, lectures & training sessions

48 training sessions on the DMP of the SNSF

25+ presentations in national & international conferences

2 Swiss Research Data Days

Resources, training & support

- Template, guidelines & checklist
- Policy tool
- Experts catalogue & interactive maps
- Trainings catalogue
- New institutional support desks
- A national Coordination Desk
- Training activities

Active data management



- Improved and developed functions
- Descriptive documentation
- Guidelines
- 2 lists of ELNs & LIMS solutions

Long-term data preservation

- Minimum viable product
- Core back-end solution
- Independent modules
- Submission, storage & dissemination
- Monitoring, dashboard & invoicing
- Maturity assessment matrix

Realised in collaboration with

swissuniversities P-5 projects

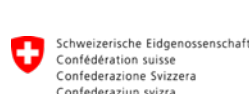


Swiss actors



FNSNF

SDSC Genohm



International actors

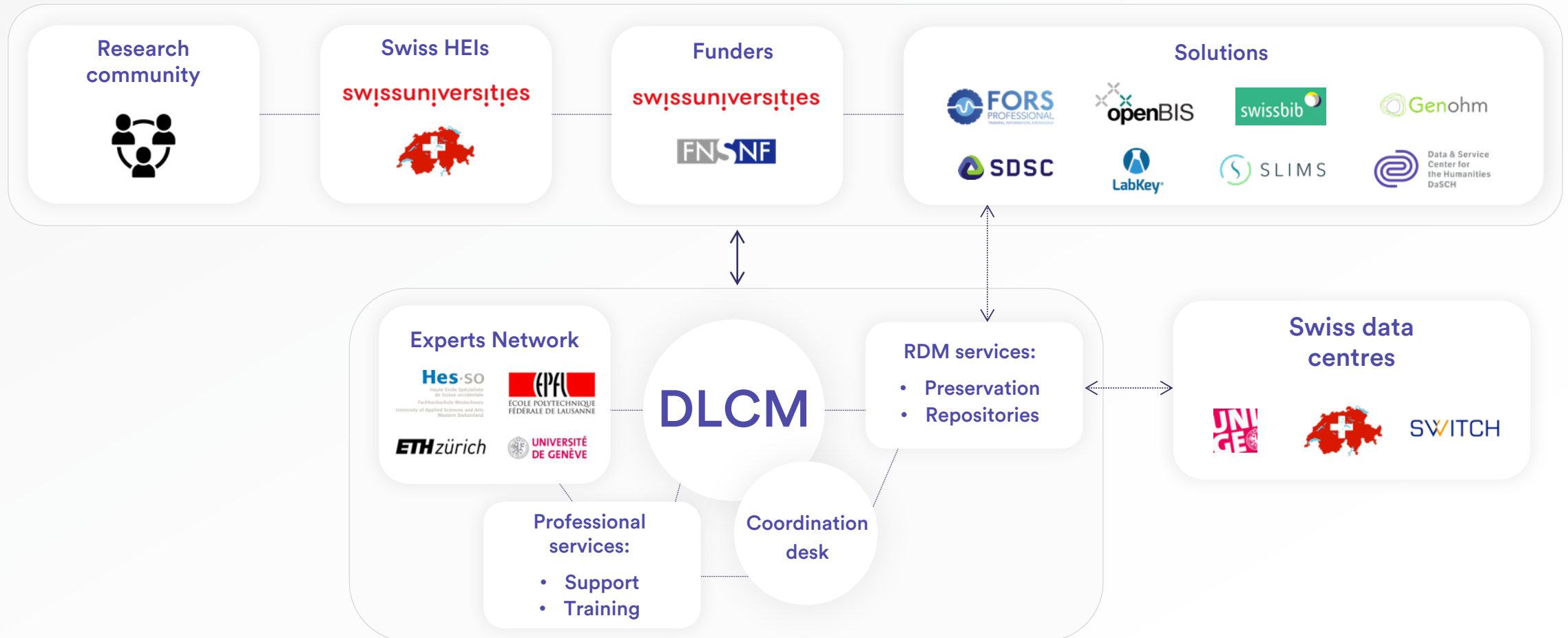


Stanford University



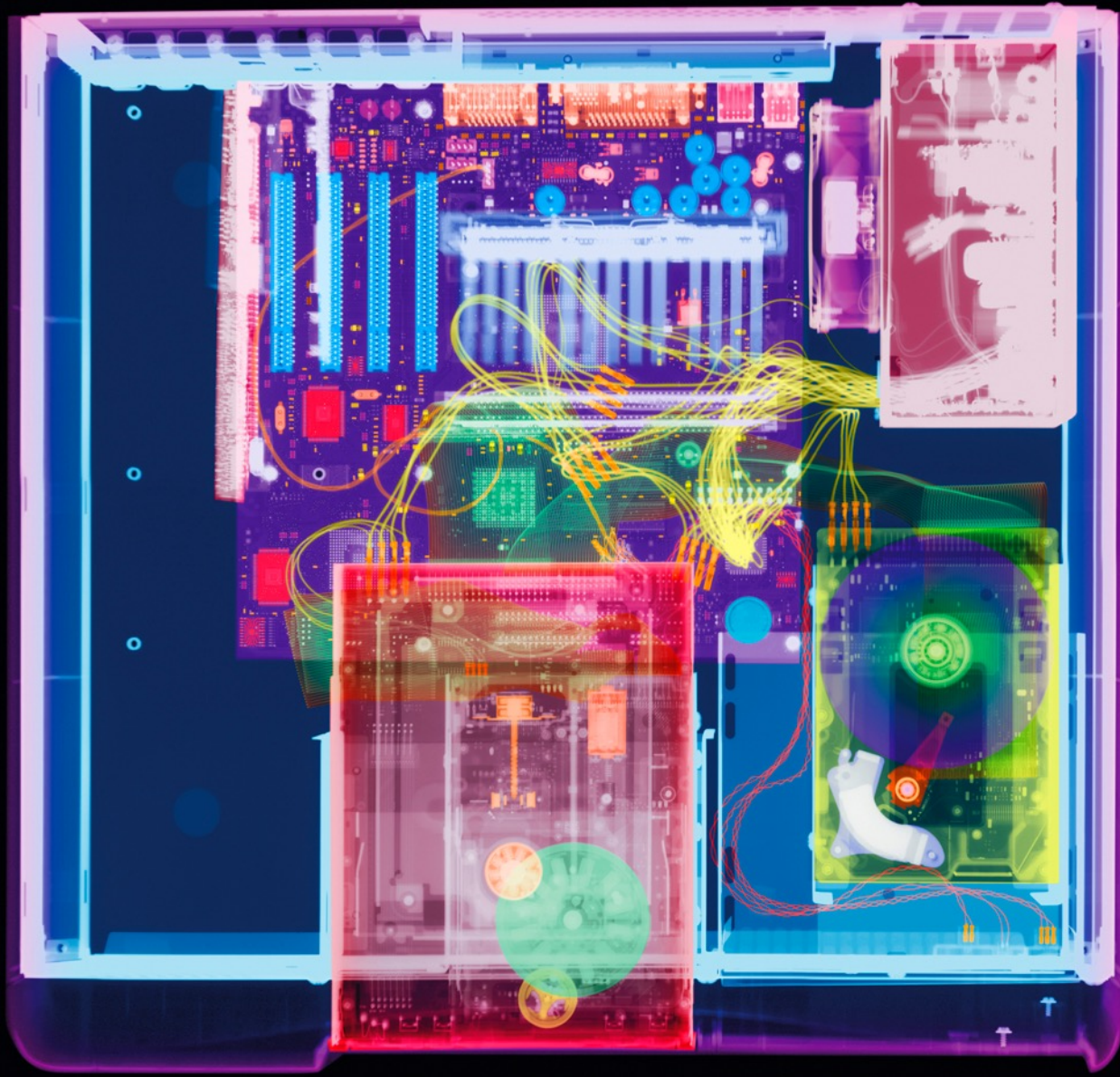
Swiss RDM

... creating an integrated Swiss ecosystem



Competition Integration





Powerful Swiss-made archiving solution

- Modular architecture
- Suited for individual- and institutional- needs
- Up to 7 copies for long-term archiving
- Open source solution
- Data stored in Swiss locations

Solution

We take care of the complicated process so you don't have to

OAIS (ISO)

Fully compliant with the OAIS standard, which is used in the archival industry

FUNDING AGENCIES

Meets the standards and FNS eligible

FAIR

We ensure that your data is preserved according to the FAIR principles

PUBLISHERS

DOI compliant, sovereignty control, keep ownership

OPEN SCIENCE

Research data can be seamlessly imported and exported in a well documented format.

CSH

Integration with SWITCH Community Service Hub

Benefits



Multiple upload options

Upload individual files, batches or time series



20 GB Free

No limit on paid plans



S3 compatible

Cloud compatible and open



Location transparency

Connect your data centre or rely on our national partners in Geneva, Lausanne, Lugano, Zurich, etc.



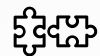
Multiplied for security

Up to 7 copies to ensure data integrity



10+ years

Up to an eternity



Modular solution

Ideally suited to meet individual institutions' needs

Services



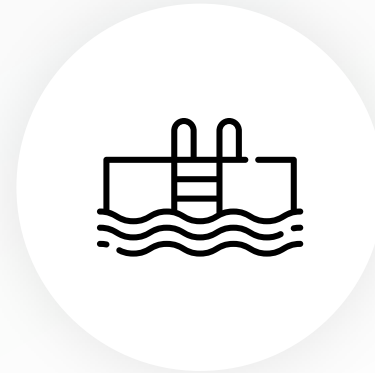
Coordination desk

Guaranteed answers within 2 working days in 3 different languages



Training program

Available on site and at a distance



Pool of experts

Access to a pool of experts through our coordination desk



Knowledge base

FAQ online and interactive maps

Products

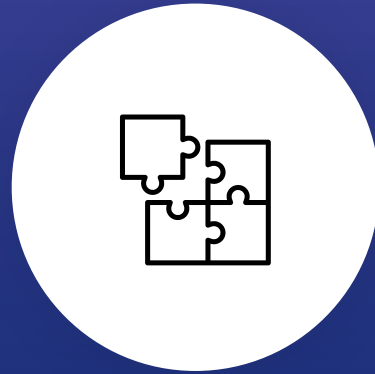
Summer 2018

2019



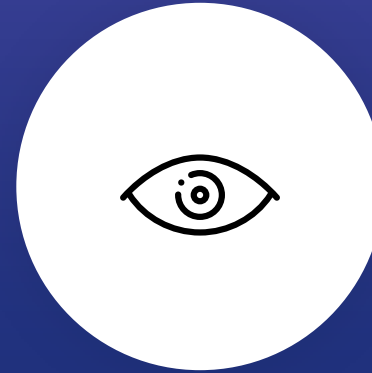
Preservation system

On-premise
Cloud
Back-ends



Integration

Solution providers
Data centers
Repositories



Data publication

Unique identifier (DOI)
Referencing
OAI-PMH



Web portal

Submission
Access
Search
Dashboard

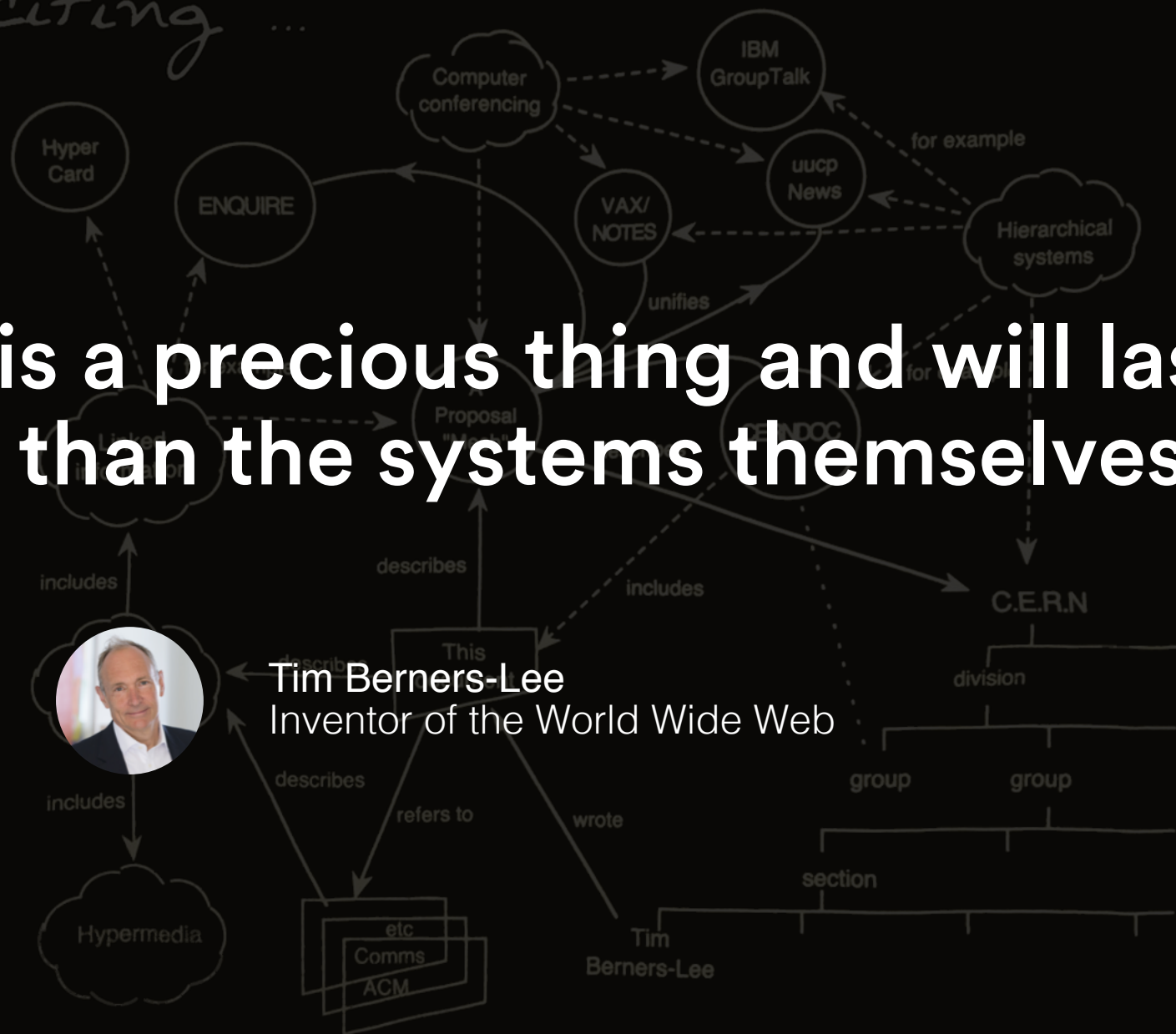
Get involved

**Be the first one on the exclusive
private launch list**

Go to : dlcm.ch/info

"Vague but exciting ..."

"Data is a precious thing and will last longer than the systems themselves."



Thank you

Contact us info@dlcm.ch

Learn more on dlcm.ch