

DLCM

Solving Data Challenges for Swiss Researchers

HUGUES CAZEAUX

SWISS RDM DAY 2018

JUNE 12, 2018

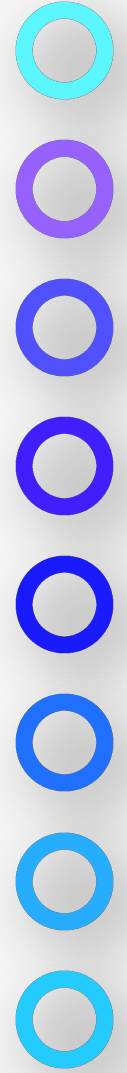


DLCM

swissuniversities



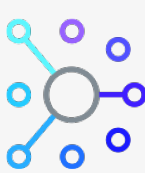
Agenda



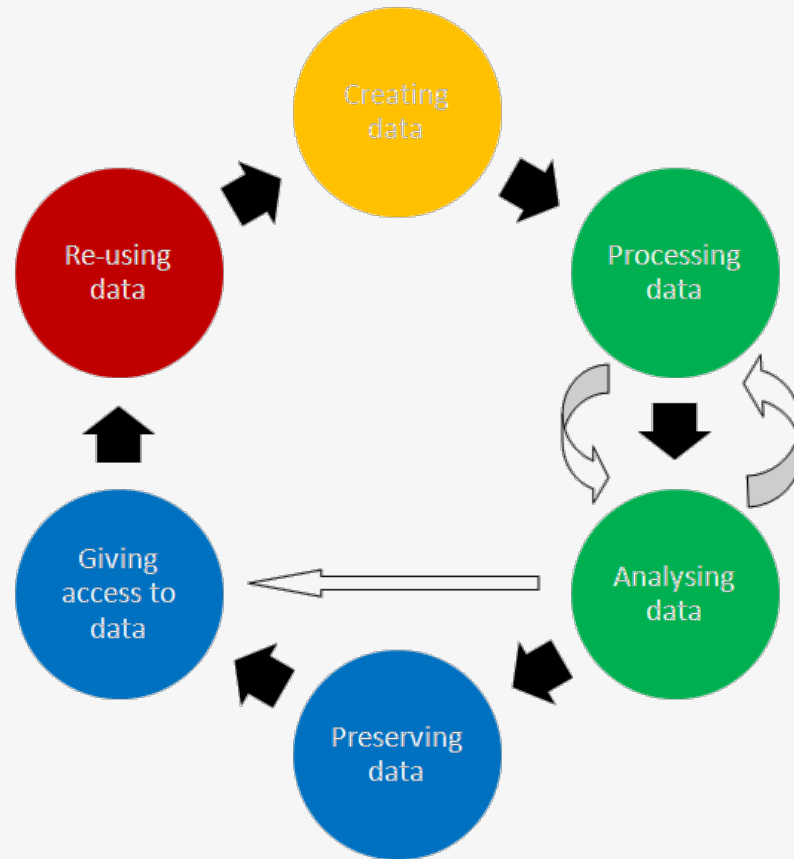


Project

“To provide sustainable and tangible solutions at a national level to implement research data life-cycle management (DLCM).”



Research Process

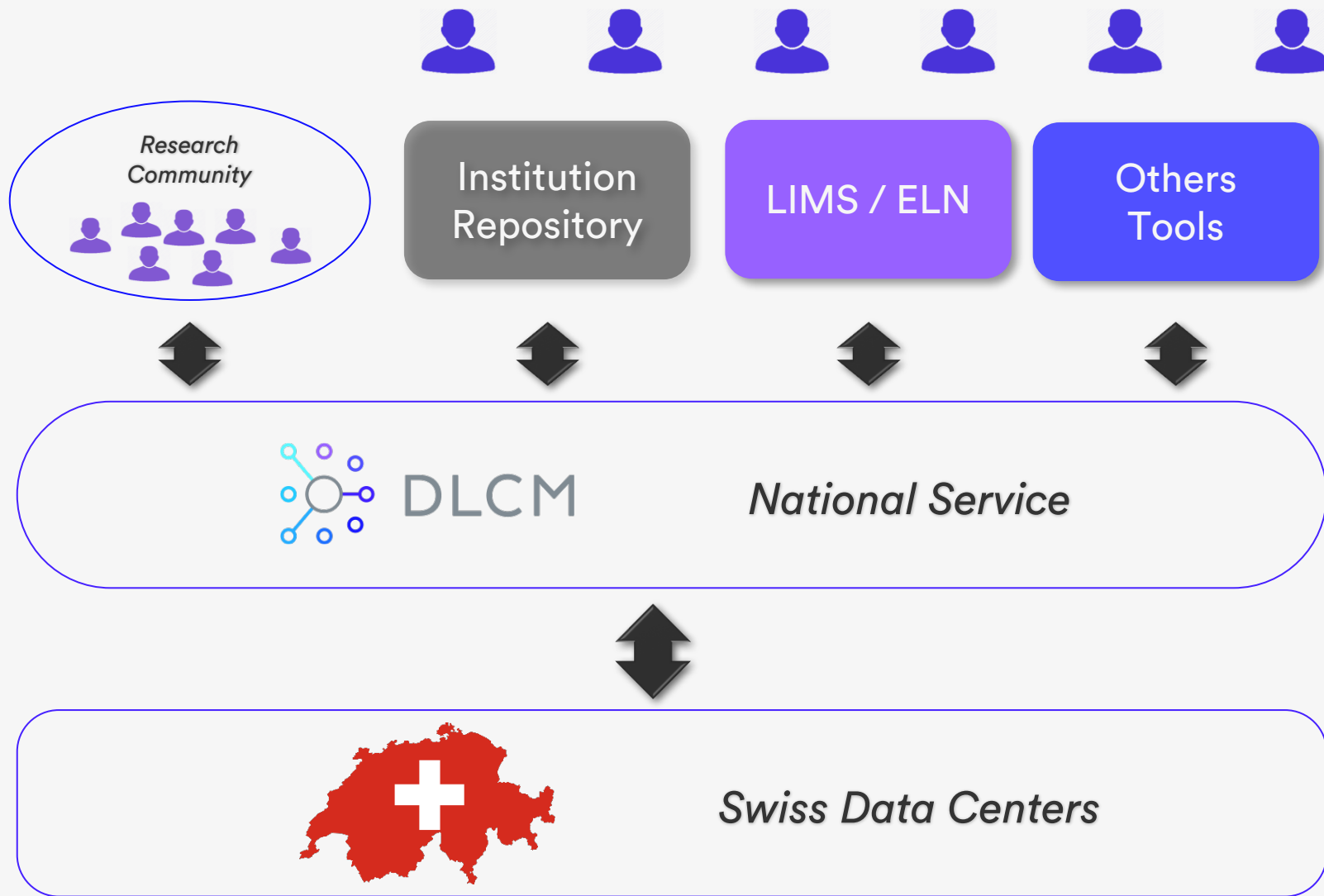


<https://www.dlcm.ch/>

Solution Architecture



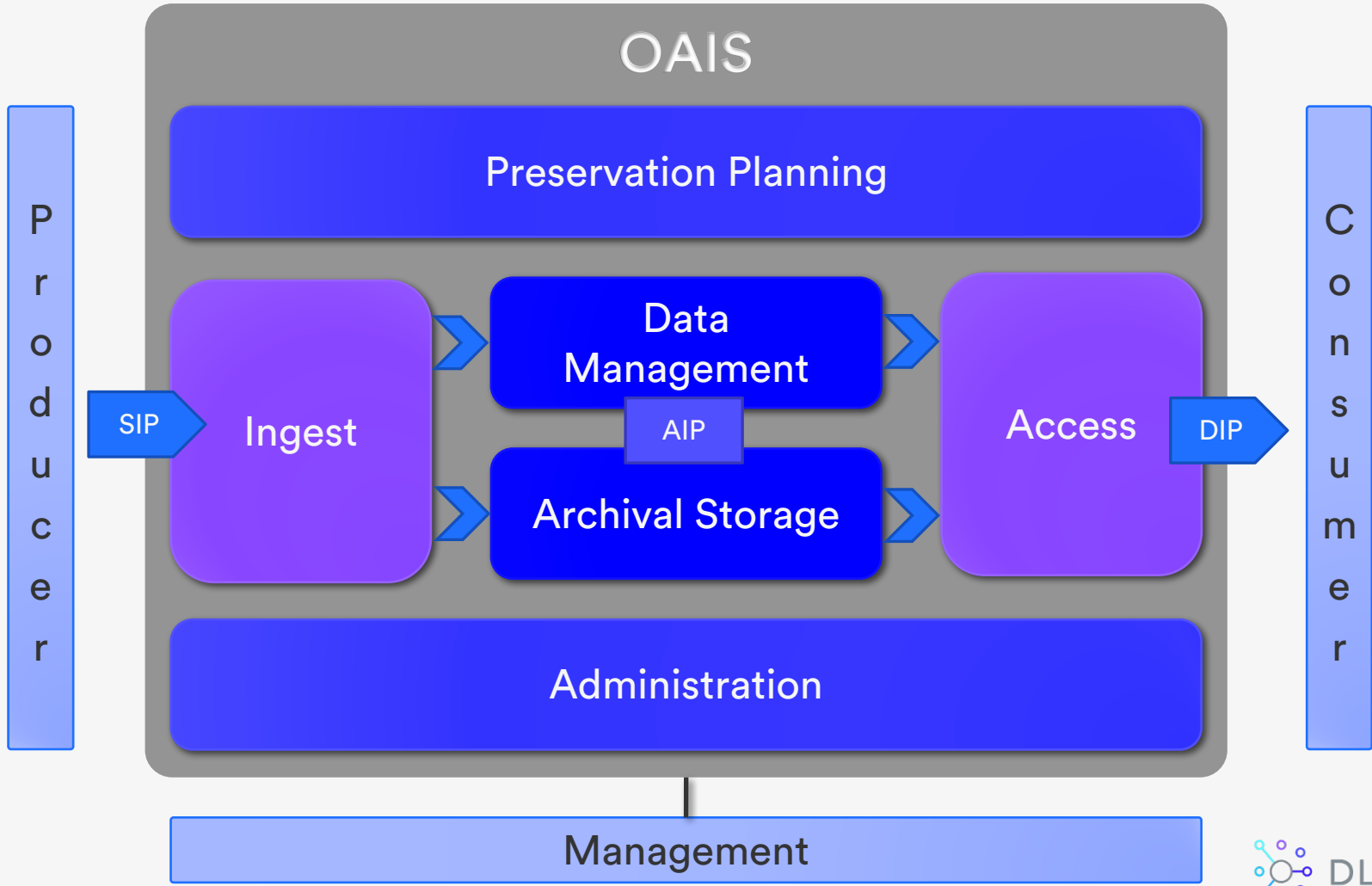
Overview





OAIS Model

Open Archival Information System
ISO 1472





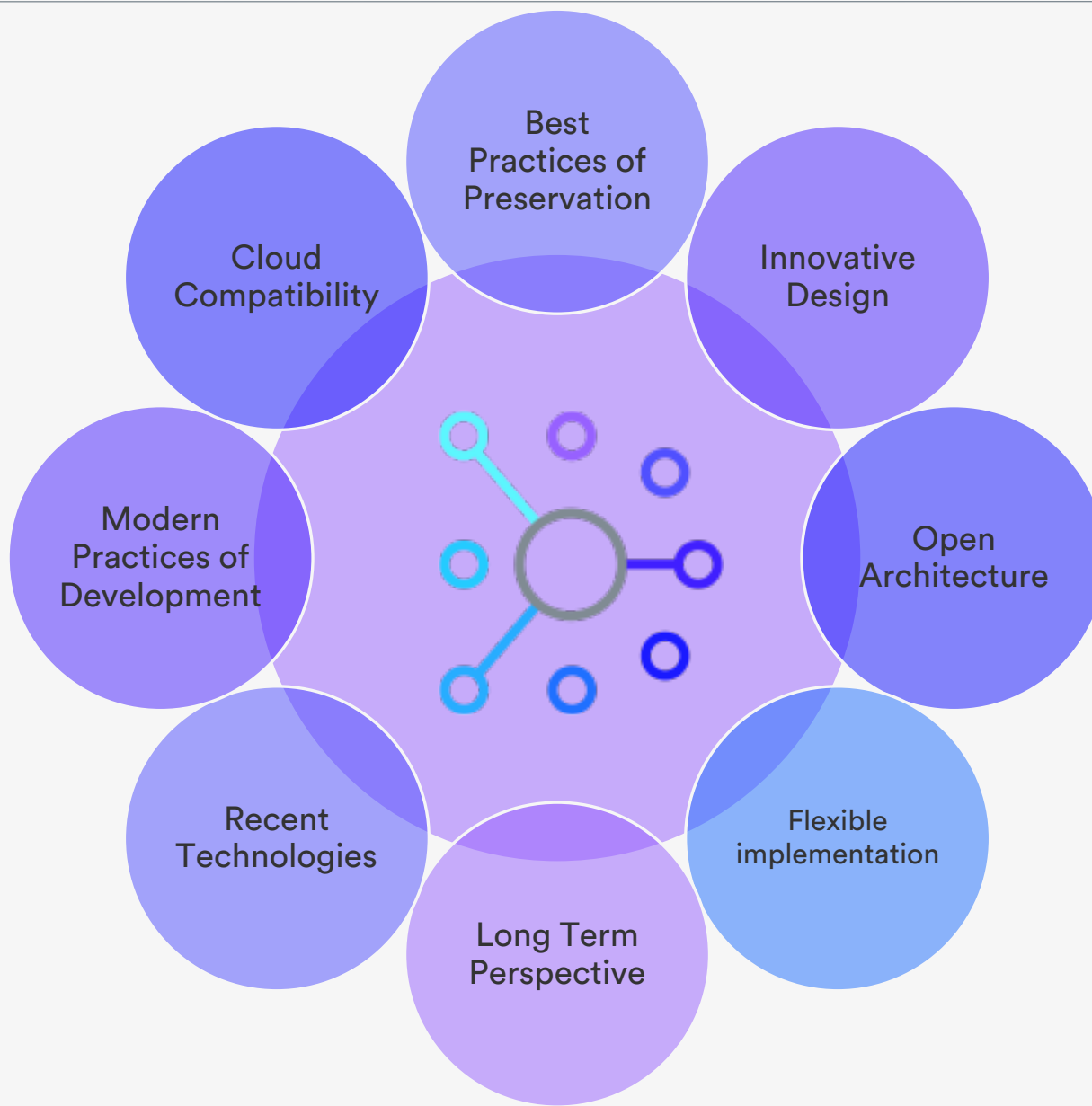
FAIR Principles

<i>FAIR</i>	<i>Requirement</i>	<i>Definition</i>
To be Findable	F-1	(Meta)data are assigned a globally unique and eternally persistent identifier.
	F-2	Data are described with rich metadata.
	F-3	(Meta)data are registered or indexed in a searchable resource.
	F-4	Metadata specify the data identifier.
To be Accessible	A-1	(Meta)data are retrievable by their identifier using a standardized communications protocol.
	A-1.1	The protocol is open, free, and universally implementable.
	A-1.2	The protocol allows for an authentication and authorization procedure, where necessary.
	A-2	Metadata are accessible, even when the data are no longer available.
To be Interoperable	I-1	(Meta)data use a formal, accessible, shared, and broadly applicable language for knowledge representation.
	I-2	(Meta)data use vocabularies that follow FAIR principles.
	I-3	(Meta)data include qualified references to other (meta)data.
To be Re-usable	R-1	Meta(data) have a plurality of accurate and relevant attributes.
	R-1.1	(Meta)data are released with a clear and accessible data usage license.
	R-1.2	(Meta)data are associated with their provenance.
	R-1.3	(Meta)data meet domain-relevant community standards.

FAIR
DATA

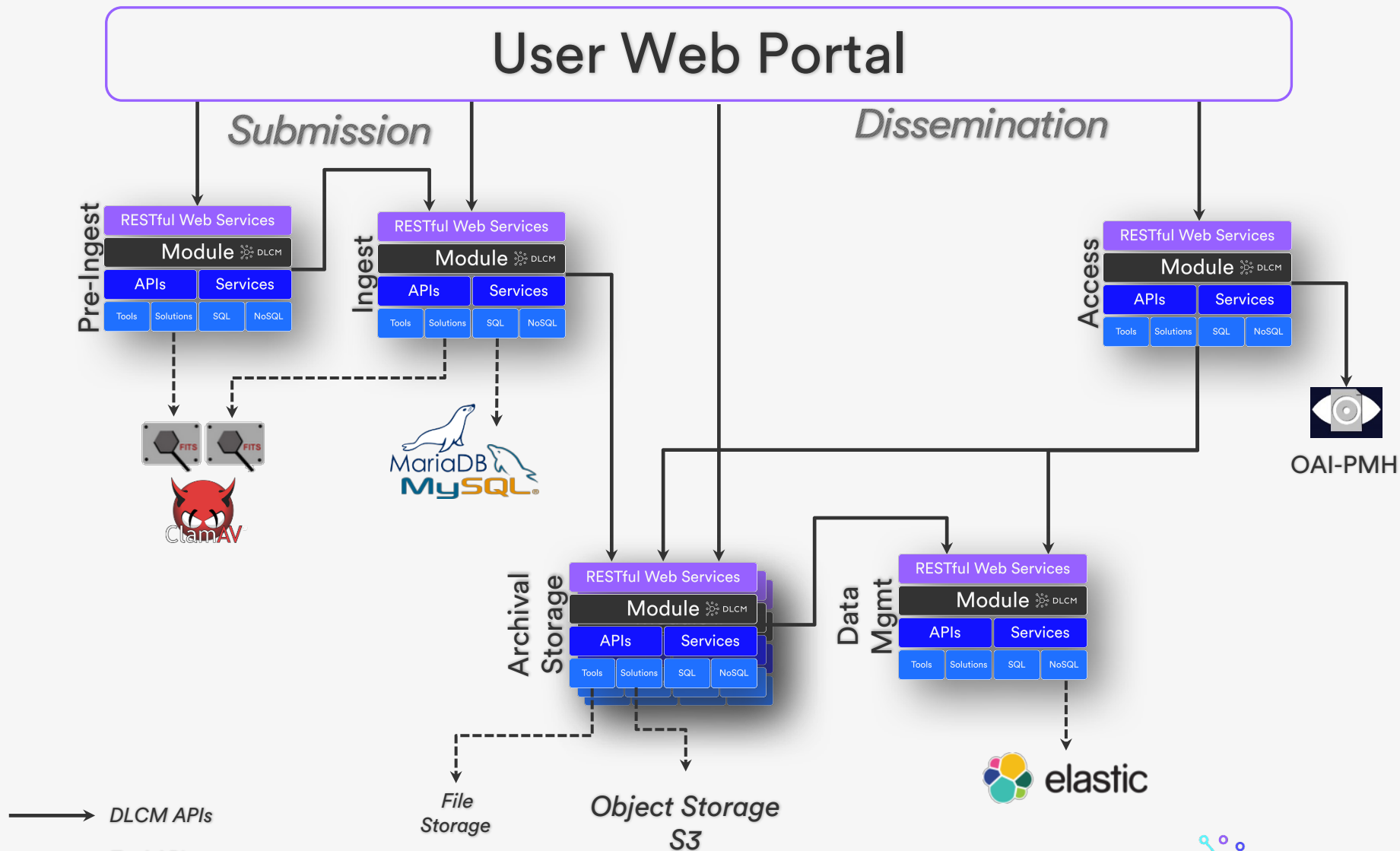


Design Values



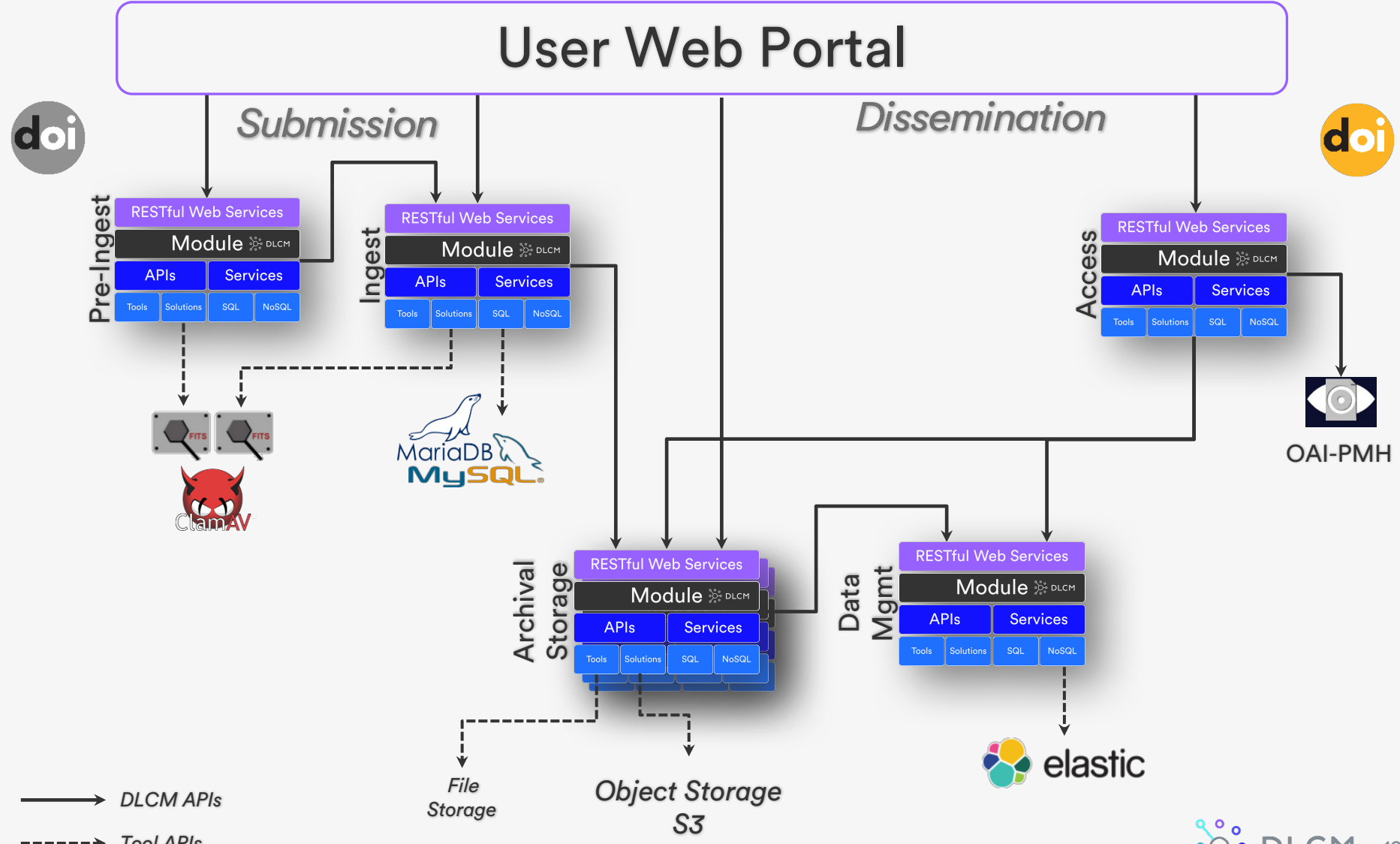


Technical Overview





Technical Overview





Data Mass Import

Active Data Mgmt

Work as usual

NAS

Personal Computers

External Hard Disks

Select & Organize data to preserve



Projects

Deposits

Folders

Data



Long Term Preservation

Validate & Preserve data

DLCM
Import Tool



DLCM User Portal

DLCM
Research Data Management Hub

Long Term Preservation Solution

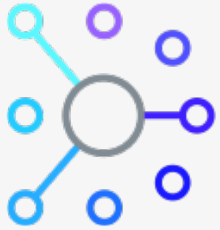
Run DLCM tool to import data files

Create deposits ready to preserve

Researcher work

Batch

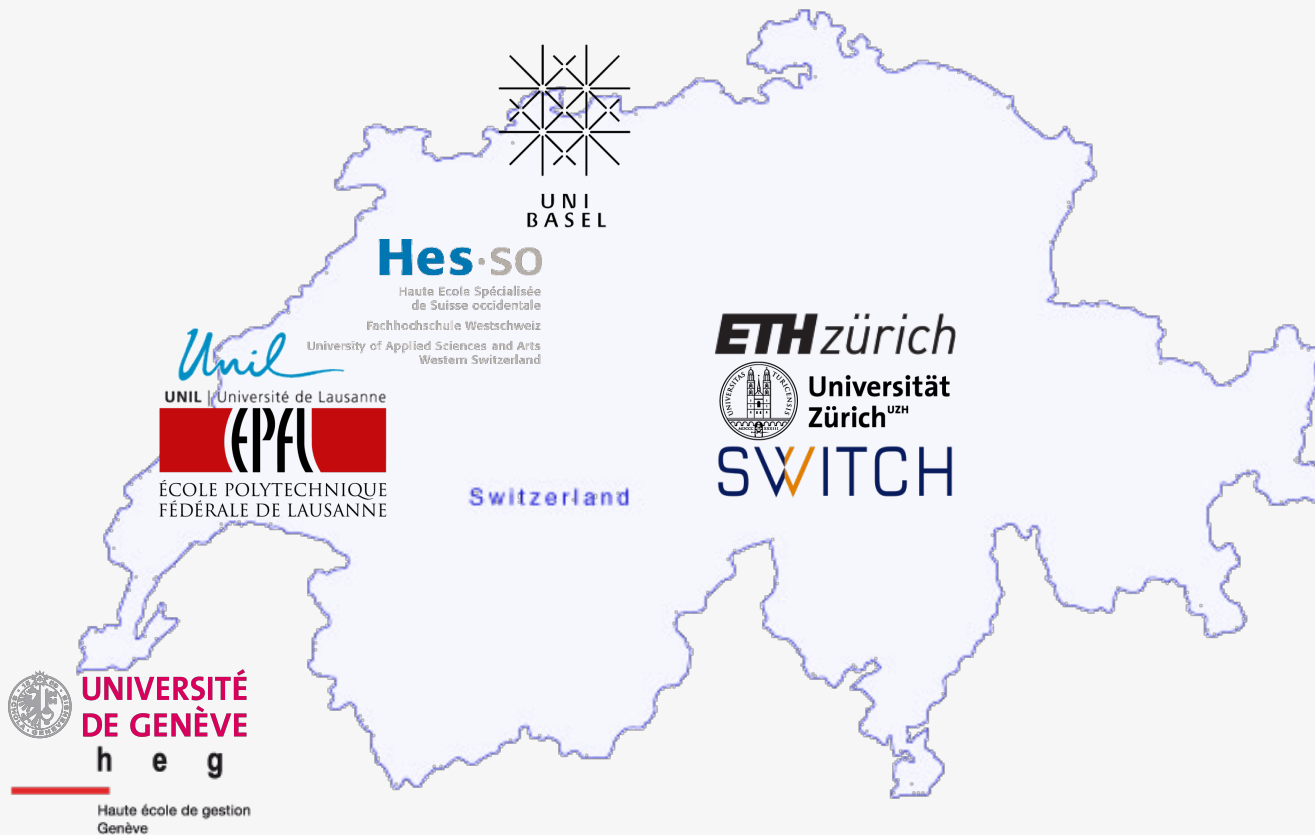
DLCM APIs



DLCLM

Research Data
Management Hub

Merci



DLCLM

swissuniversities